

# Report Manager

## Sophisticated and Customizable Reporting Solution in a User-Definable Dashboard

Report Manager is a web-based and mobile-based dashboard offering a consolidated reporting portal for fast access to information on portfolio activity, investments, P&L and exposure. Tightly integrated with Analytics Master, Broadridge's flagship reporting data warehouse and reconciliation solution, Report Manager provides fund administrators and hedge fund clients access to key portfolio data in a single view. Leverage customizable dashboards comprised of configurable 'widgets' that include eye-catching, interactive charts and data grids, with full drill-down capabilities.

**Executive Level Reports**

Take advantage of our web, mobile or tablet-based functionality providing immediate access to critical business information.

- A broad range of easily customizable executive reporting dashboards with output in Excel, PDF, CSV, Word or XML
- Dynamic drill down through multiple data levels for both grid and chart data

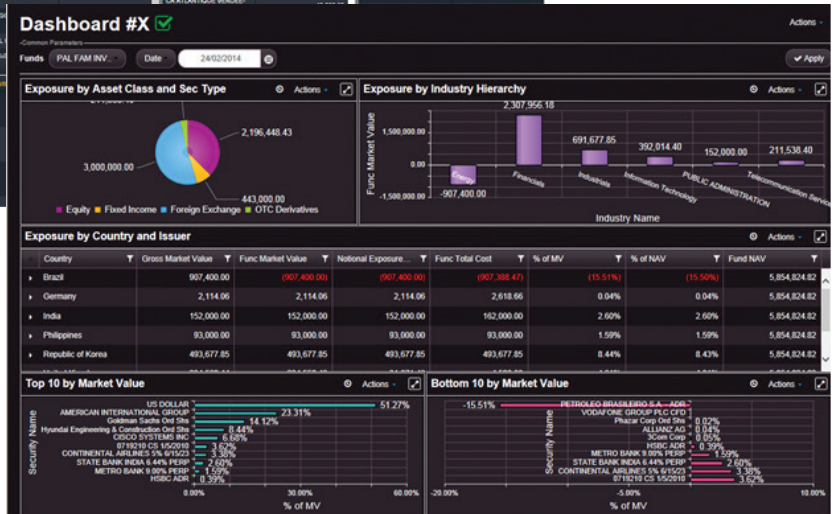
### Superior Reporting Features

- **Widget-Based Dashboard** – Drag and drop widgets into named dashboards
- **Custom Reporting** – Intuitive interface for creation of chart and grid widgets
- **Flexible File Formats** – Output to various formats, including Excel, PDF, CSV, Word, XML
- **Multi-Level Drilldown** – Dynamic drilldown through multiple data levels for both grid and chart data
- **Common Parameters** – Dashboard-level consolidation of report parameters across multiple widgets
- **Presentation Ready Reporting** – Generate printable PDF documents comprising several charts and summary data tables



### Market-Leading Technology

- ➔ **Flexibility** – Based on modern web standards (HTML5) supporting desktop and mobile deployment
- ➔ **Deployment** – Secure deployment over the Internet or embedded in Portfolio Master
- ➔ **Security Administrator** – User rights control over dashboard creation and publishing
- ➔ **Dashboard Management** – Dashboard sharing with other users by organising users and dashboards into group hierarchies



## Advanced Features for Hedge Fund Administrators

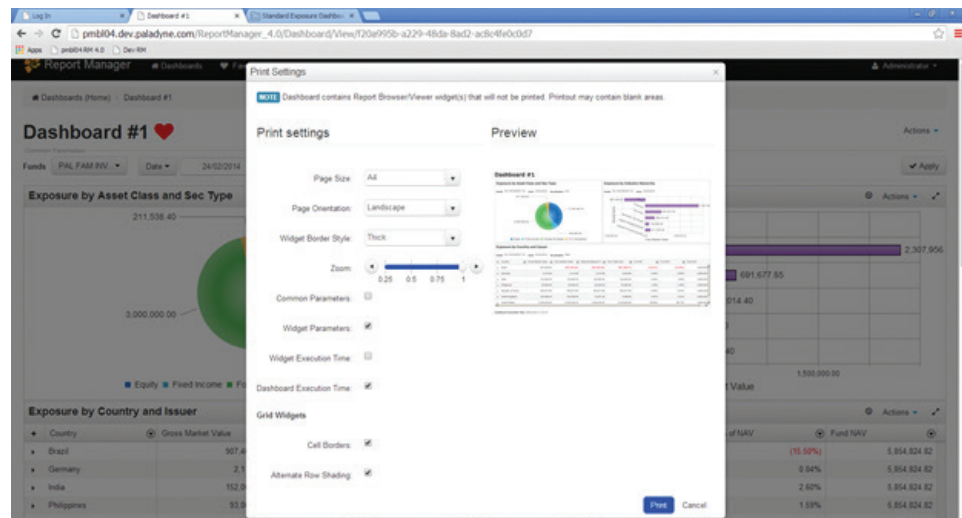
- ➔ **Single Sign-On** – SSO integration with external web applications using SAML authentication protocol
- ➔ **Portal Integration** – Dashboards or single widgets can be embedded into corporate web portals
- ➔ **Corporate Branding** – Custom theme definition and embedded Java script banner
- ➔ **Usage Statistics** – Monitor usage at client-level and by individual client users
- ➔ **Data Administration** – Data publishing manager for controlled access to pre-approved data

## Two Deployment Choices

1. **Via the Internet** – secure application can be directly accessed through a web browser on a workstation, mobile device, or tablet. For access from mobile devices, such as iPads and Android tablets, this is the only supported deployment option.
2. **Via Citrix (Portfolio Master users only)** – application can be launched from within Portfolio Master in an embedded web browser window controlled by the parent application.

## Dashboard Printing Options

Report Manager enables users to create printable reports combining several summary-level tables and charts in a single PDF document. This dashboard printing functionality offers various print options such as page orientation and zoom factor, widget border style and alternate row shading. PDF generation can also be scheduled for daily automated delivery to users' mail inboxes with Business Manager.



## Leading-Edge Mobile and Tablet-Based Dashboards

Report Manager is implemented using HTML5 technology - a cross-platform standard supported on Apple, Android and other platforms including Microsoft - enabling reporting dashboards to be viewed on mobile devices.

**Contact us at [bimssales@broadridge.com](mailto:bimssales@broadridge.com) for more information.**



Americas  
420 Lexington Avenue  
New York, NY 10170  
+1 646 214 3777

EMEA  
52 Cornhill, 3rd Floor  
London England EC3V 3PD  
+44 (0) 203 375 8010

Asia Limited  
5th Floor, Ruttonjee Center  
11 Duddell Street, Central Hong Kong  
+852 3695 5128



1 888 725 2396  
[broadridge.com](http://broadridge.com)